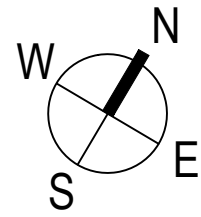


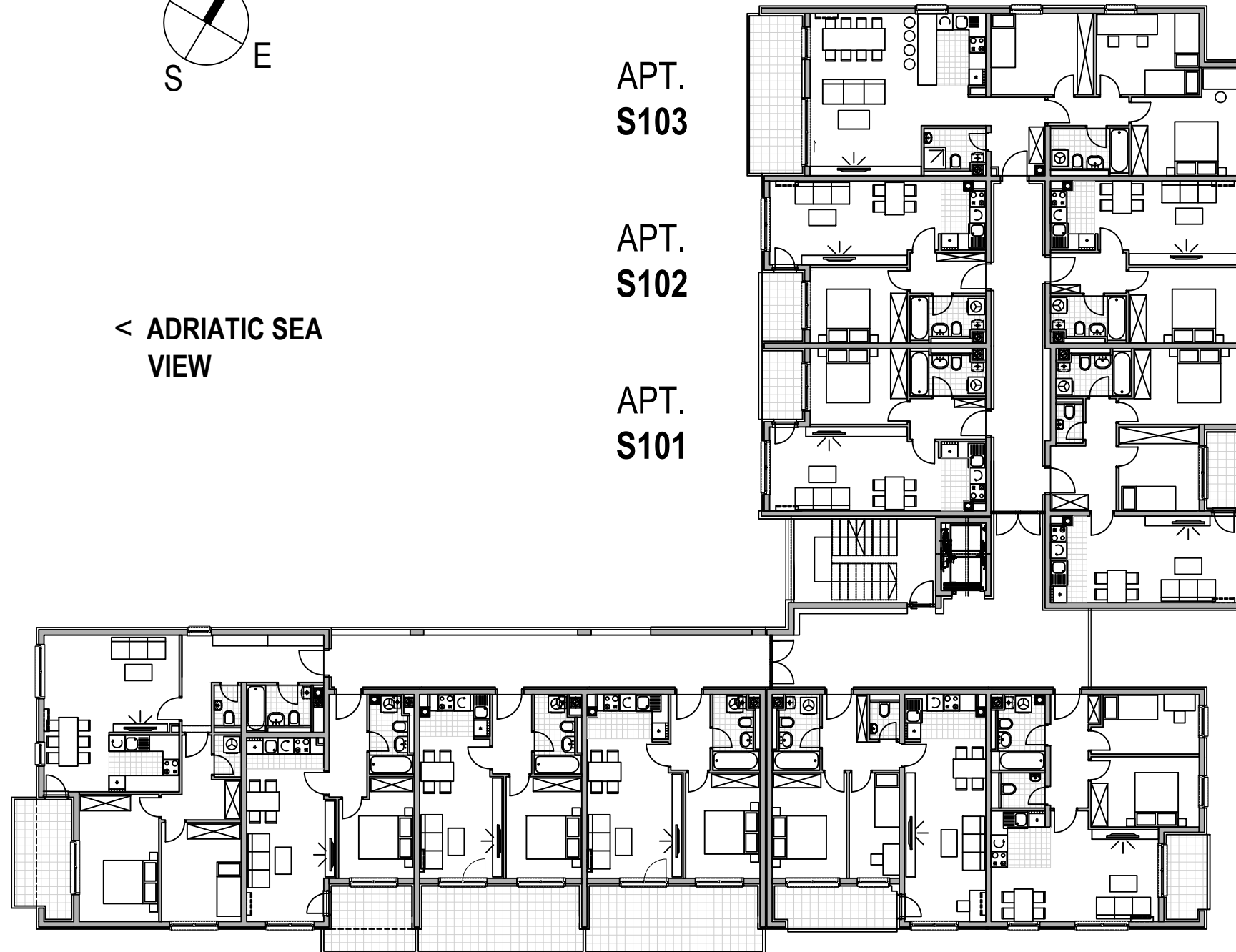
**RESIDENTIAL / COMMERCIAL
BLOCK
"KONTUŠEVA"
Martin Kontuš Street, RIJEKA**

1st FLOOR

APARTMENT 101 1 bedroom	40,69 m ²	APARTMENT 107 2 bedroom	53,64 m ²
balcony	2,86 m ²	balcony	5,29 m ²
TOTAL	43,55 m²	TOTAL	58,95 m²
APARTMENT 102 1 bedroom	40,69 m ²	APARTMENT 108 1 bedroom	40,52 m ²
balcony	2,86 m ²	balcony	11,51 m ²
TOTAL	43,55 m²	TOTAL	52,05 m²
APARTMENT 103 3 bedroom	86,05 m ²	APARTMENT 109 1 bedroom	37,41 m ²
balcony	8,63 m ²	balcony	10,76 m ²
TOTAL	94,65 m²	TOTAL	48,15 m²
APARTMENT 104 1 bedroom	39,05 m ²	APARTMENT 110 1 bedroom	38,91 m ²
TOTAL	39,05 m²	balcony	3,59 m ²
APARTMENT 105 2 bedroom	55,59 m ²	balcony	0,70 m ²
balcony	3,20 m ²	TOTAL	43,20 m²
TOTAL	58,80 m²	APARTMENT 111 2 bedroom	75,93 m ²
APARTMENT 106 2 bedroom	54,58 m ²	balcony	4,21 m ²
balcony	3,48 m ²	balcony	0,81 m ²
TOTAL	58,05 m²	TOTAL	80,95 m²



< **ADRIATIC SEA
VIEW**



**APT.
S111**

**APT.
S110**

**APT.
S109**

**APT.
S108**

**APT.
S107**

**APT.
S106**

**APT.
S103**

**APT.
S102**

**APT.
S101**

**APT.
S104**

**APT.
S105**

0 2m 4m 6m 8m 10m

NIVOGRAĐNJA d.o.o.
ZAGREB, Medvedgradska 19
tel.: +385 (0)1 / 4666 335, 4666 338, 4666 765
fax: +385 (0)1 / 4666 685, 4667 415